

Conversational Interaction: A new look at HMI

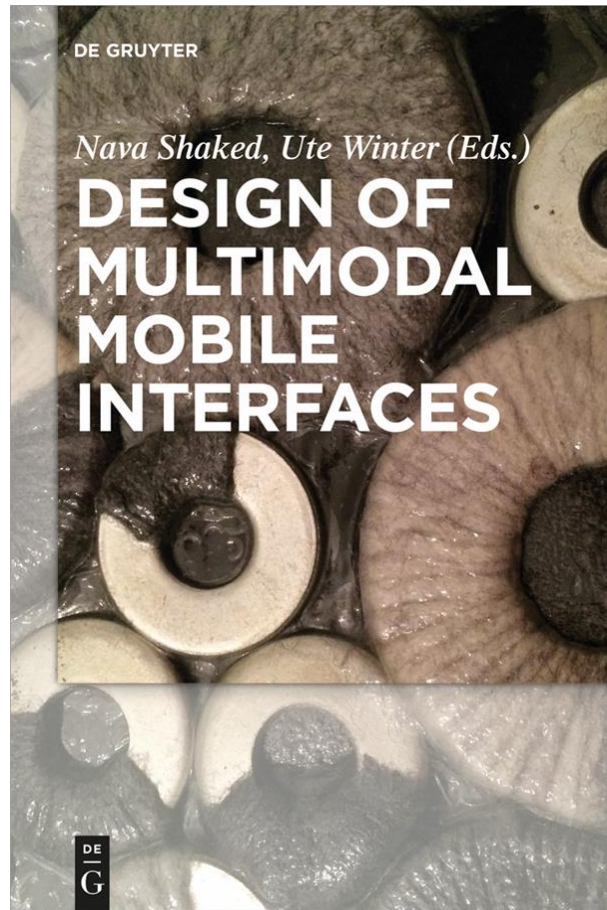
Dr. Nava Shaked, HIT, Israel

International Symposium on
Ambient Intelligence and Embedded Systems

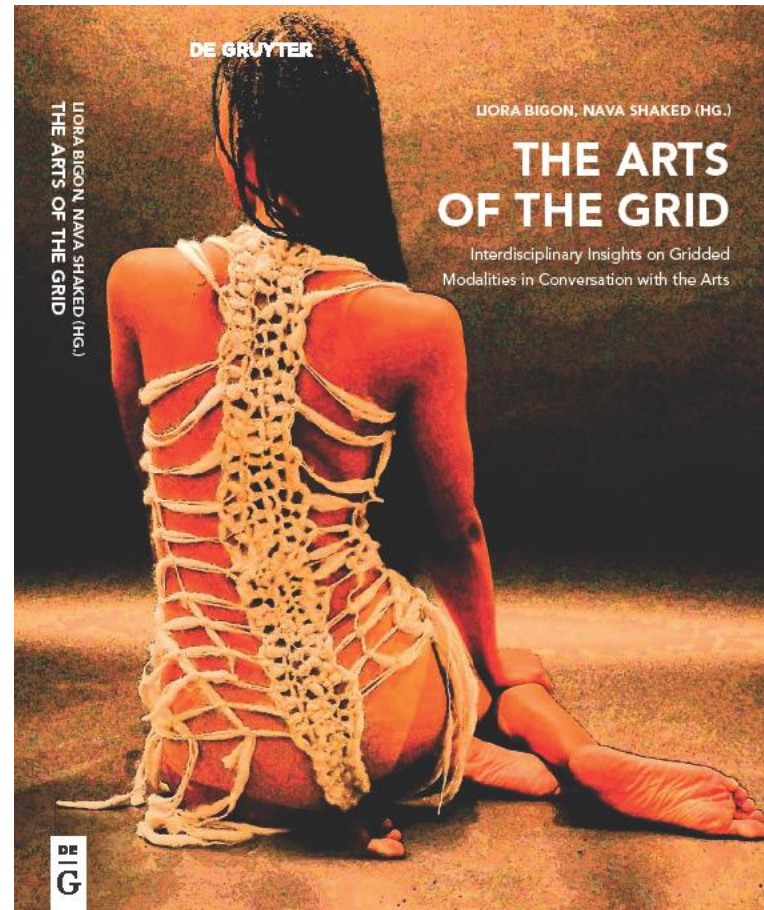
AmiEs-2022



2016



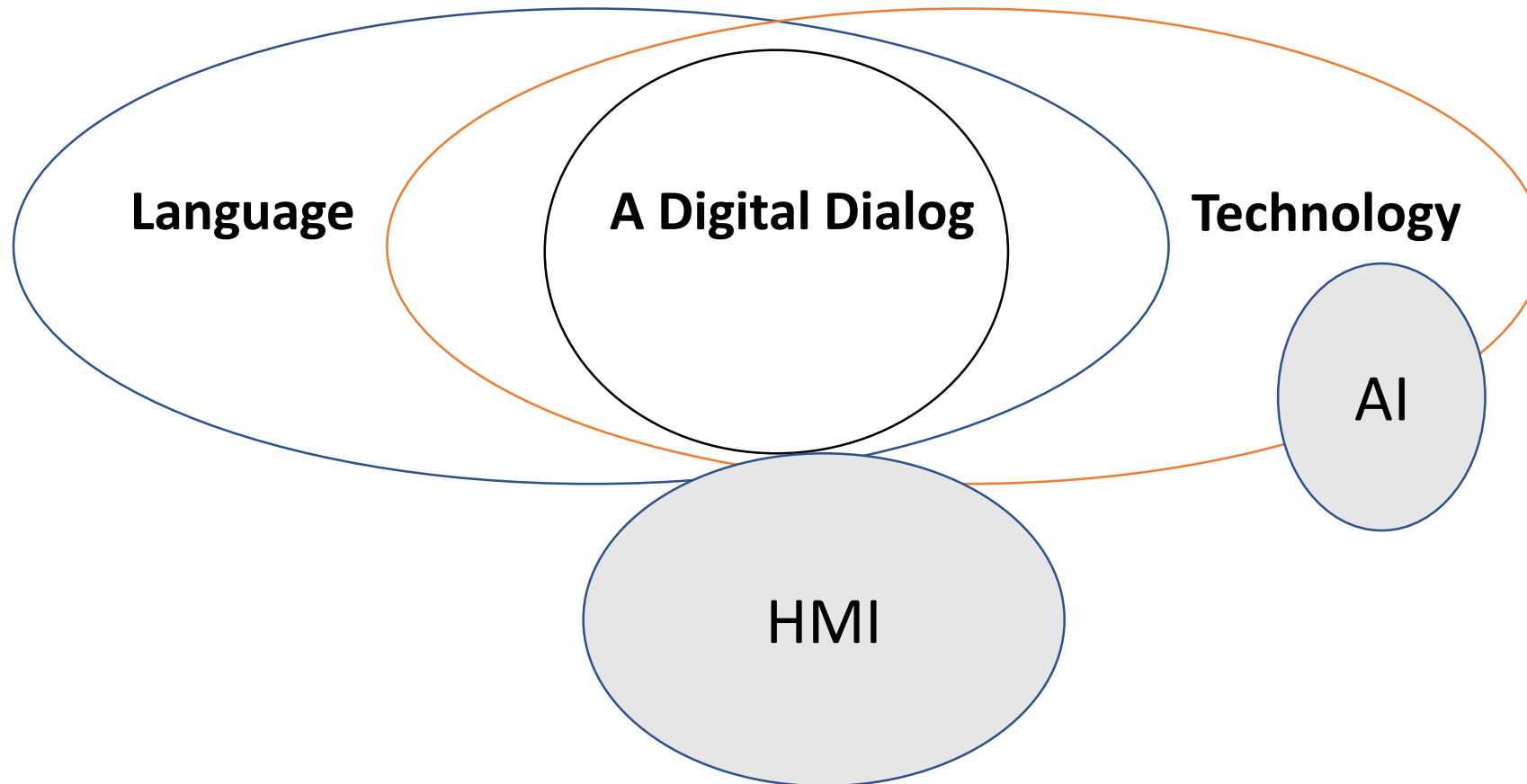
2021



The digital Era



The Dialog as a Grid



Digital Dialog - a fusion Grids

“Language has no independent existence apart from the people who use it. It is not an end in itself; it is a means to an end of understanding who you are and what society is like.”

David Crystal

“The digital dialog”

1. Face to Face (FTF) dialog,
2. Computer Mediated Communication (CMC).
3. Human Machine Interaction (HMI)

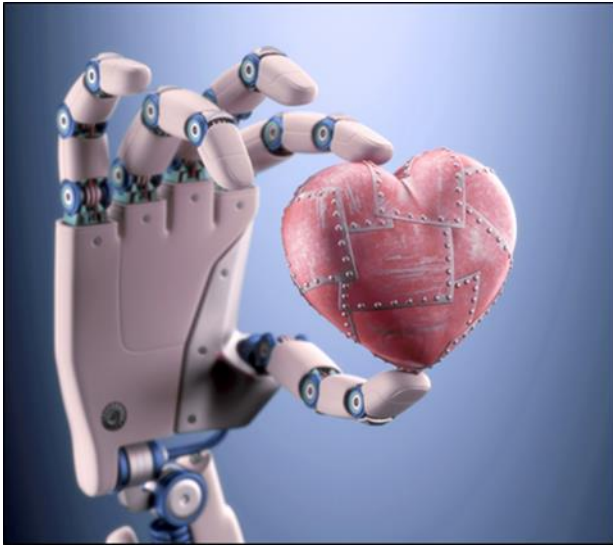
New - “the digital dialog” which refers to the way we interact in the different levels of the technological grid (avatars, PA , IM, Social Media, Gaming)

Face to Face Dialog (FTF)

- Understand me and my needs
- Be empathetic
- Build Trust
- Structures Dialog
- UX – Personalization, Customization
- Closeness, caring, responsibility



Computer Mediated Communication (CMC).



Any human communication that occurs through the use of two or more electronic devices.

Time Line for IM platforms

1996	2003	2004	2006	2009	2010	2011	2013	2021
ICQ	skype	Gmail, Facebook	Twitter	WhatsApp	Instagram, Viber	WeChat	Telegram	Signal



A word about globalization of digital language

- ✓ The effect of English on Multilanguage
- ✓ The use of emoji & memes– what's the story?

Example: Emoji palette



Human Machine Interaction (HMI)

Human



Machine

Task



Plymouth



AIBO



Jibo

Social Robots



Gerijoy



Misty II



Pepper

Types of Interactive Virtual Dialog

Qualities Type of VA	Visual – Personification	Voice enabled	Text enable	ML based Dialog	Simple/min interaction	Personal ization options	3 rd party agent	Multimodal /Effective interaction
Service Bot		V	V		V		V	
Chat Bot			V		V			
Virtual assistance		V	V	V		V	V	
Personal Assistance		V		V		V		
Conversational Agent		V		V		V		V
Virtual Agent							V	
Avatar	V	V		V		V		V
Humanoid	V	V		V		V		V

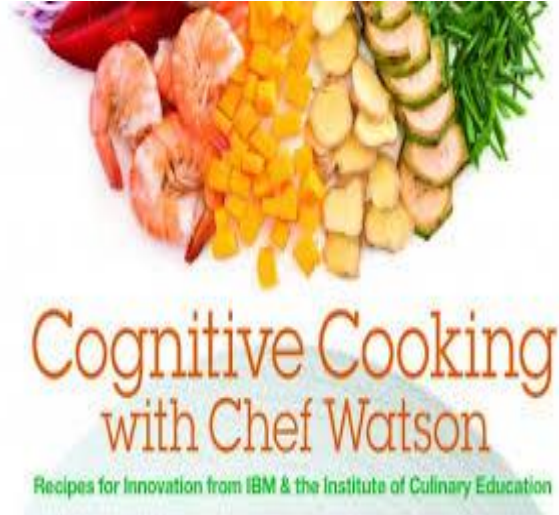
COMPUTING



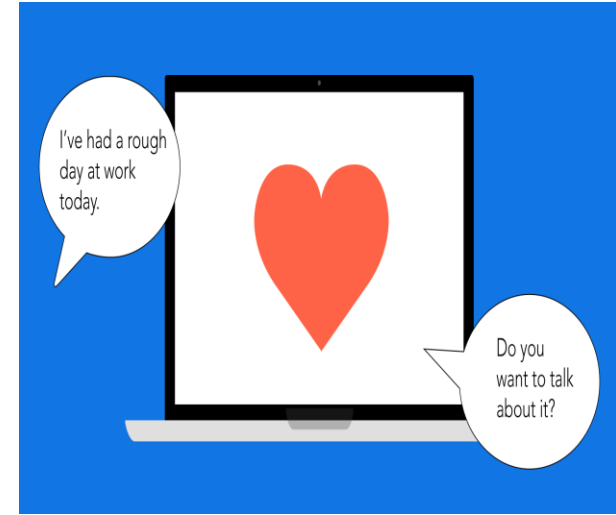
**COGNITIVE
COMPUTING**



**Creative/
Predictive
Computing**



**AFFECTIVE
COMPUTING**



The Evolution

Types of AI

Narrow AI

Google
Duplex, Bots

General AI

Watson
Debater,
BERT model

Generative AI

GTP3, DALL·E 2
Chef Watson

Edge AI

smart utility
grid streaming
video
optimization,
and drone
management.





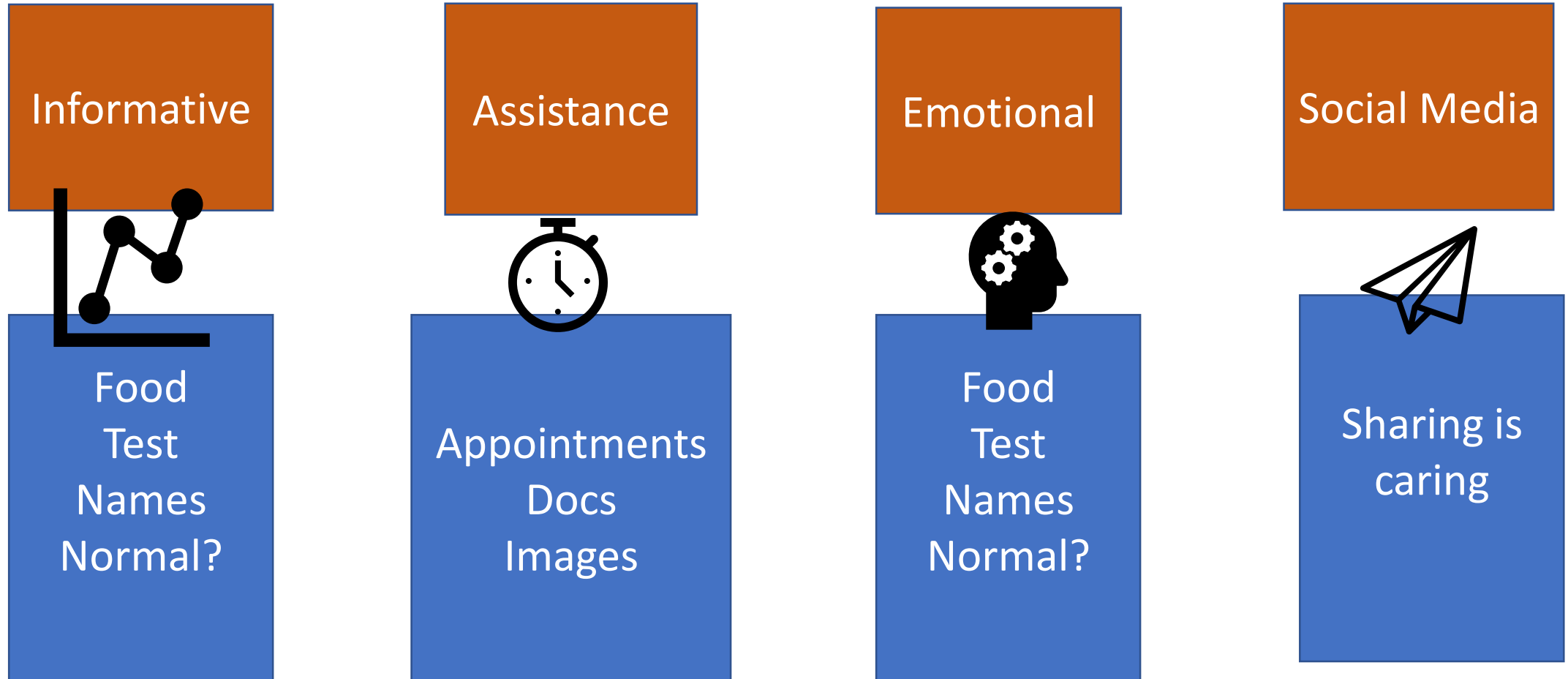
Hera

The First Avatar
For Pregnant Women

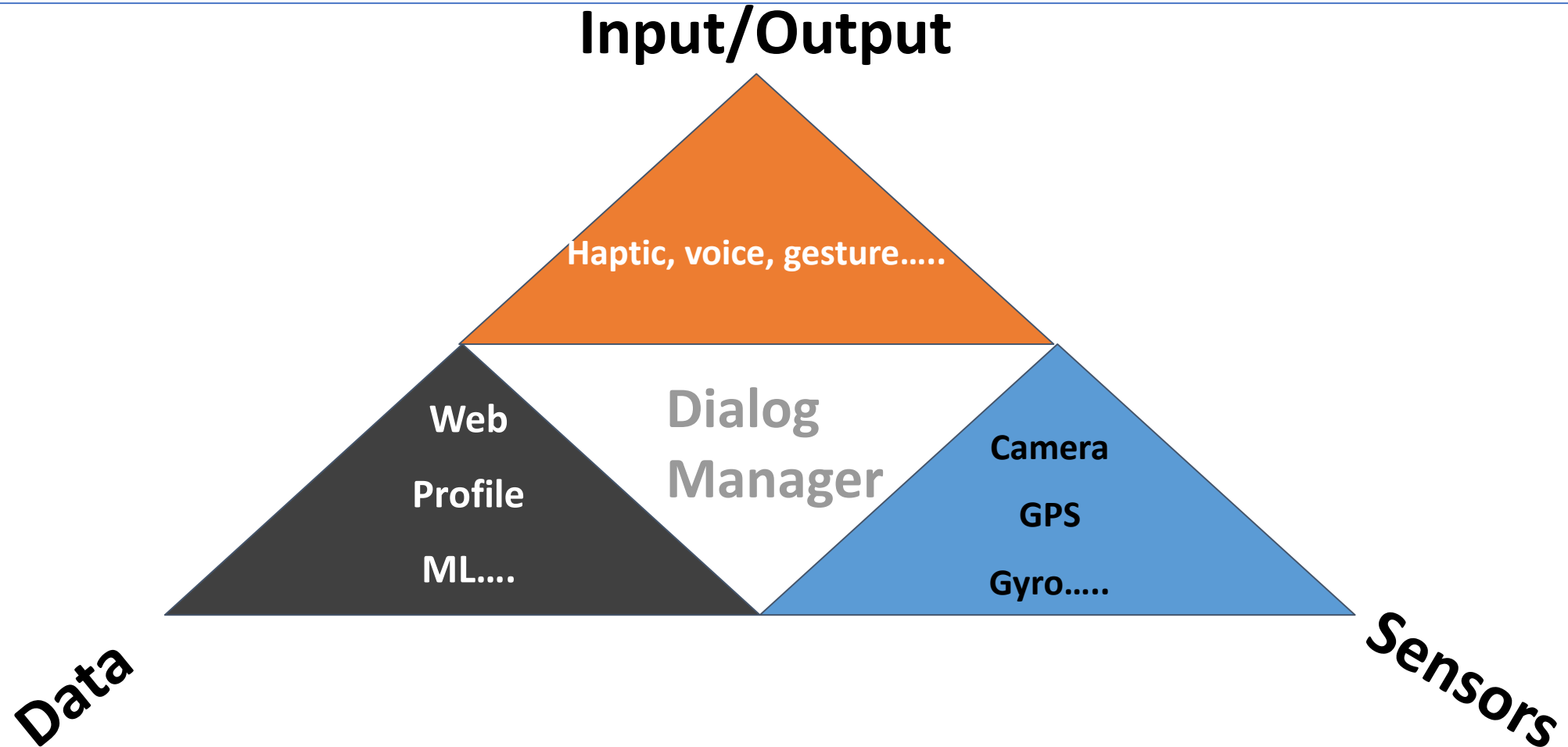
Choose your Hera



System Functionality



Multimodality- Interface Definition



The Multimodality Triangle

- **Sensors:**

- Camera, Gyro, Clock, GPS, Mic, Accelerometer, etc

- **I/O Technologies**

- Speech, Type, Touch
- Biometrics, Gesture
- Eye tracking
- Face & lip movement
- Image processing

- **Using Context sensitive information**

- Data bases & Statistics
- Personalization
- Behavior patterns
- Trends and predications
- Offering

SimSensei- interactive virtual agent-based clinical decision support tool and

USC Institute for
Creative Technologies

University of Southern California

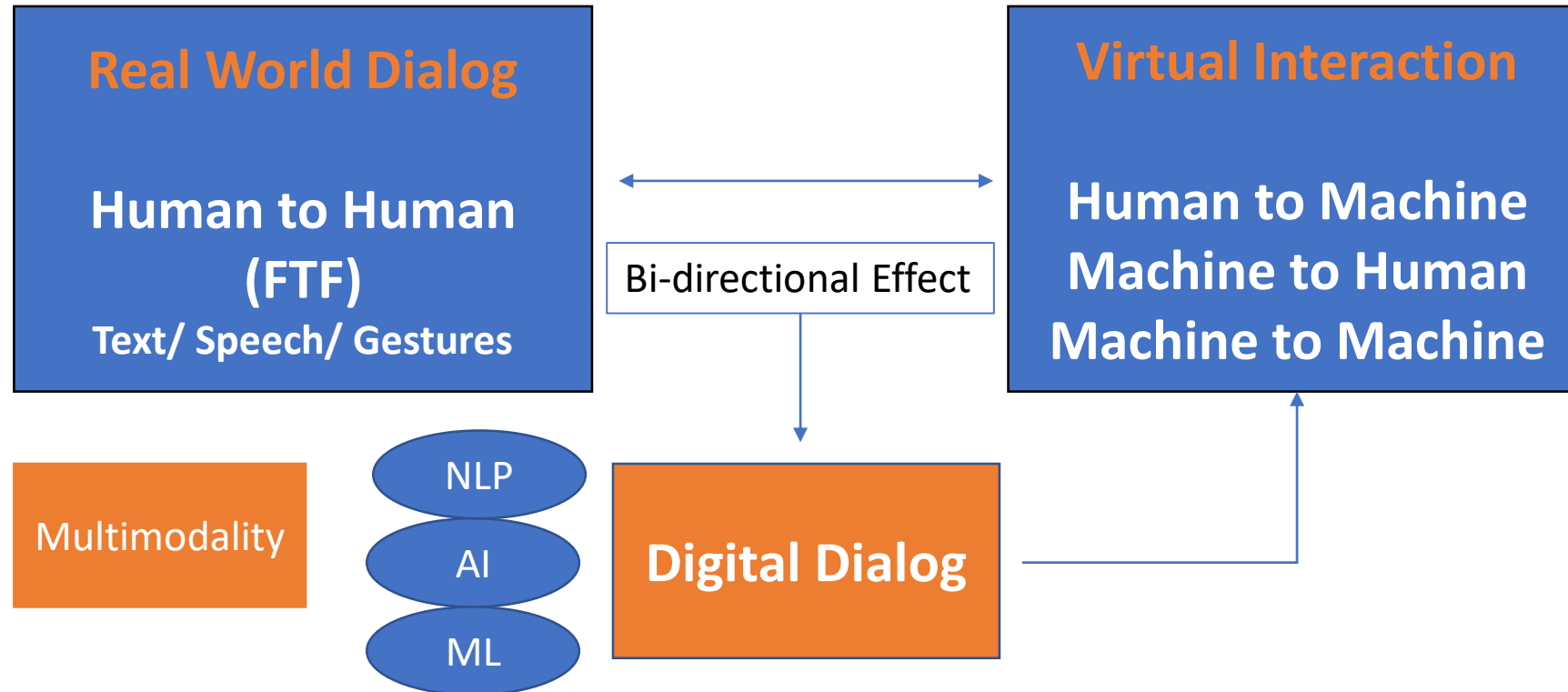
SimSensei: Virtual Human for Healthcare Support & **MultiSense:** Multimodal Perception and Learning

Albert (Skip) Rizzo, PI
Louis-Philippe Morency, PI

As part of DCAPS program:
Detection & Computational Analysis of Psychological Signals
(3rd Interim Progress Video)

The work depicted here was sponsored by the U.S Defense Advanced Research Projects Agency. Statements and opinions expressed do not necessarily reflect the position or the policy of the United States Government, and no official endorsement should be inferred.

The fusion of Grids



Dank u



shakedn@hit.ac.il