

AI & IoT = Magic?

An Anthropological Perspective



Dr. Yoel Tawil

H.I.T – Holon Institute of Technology

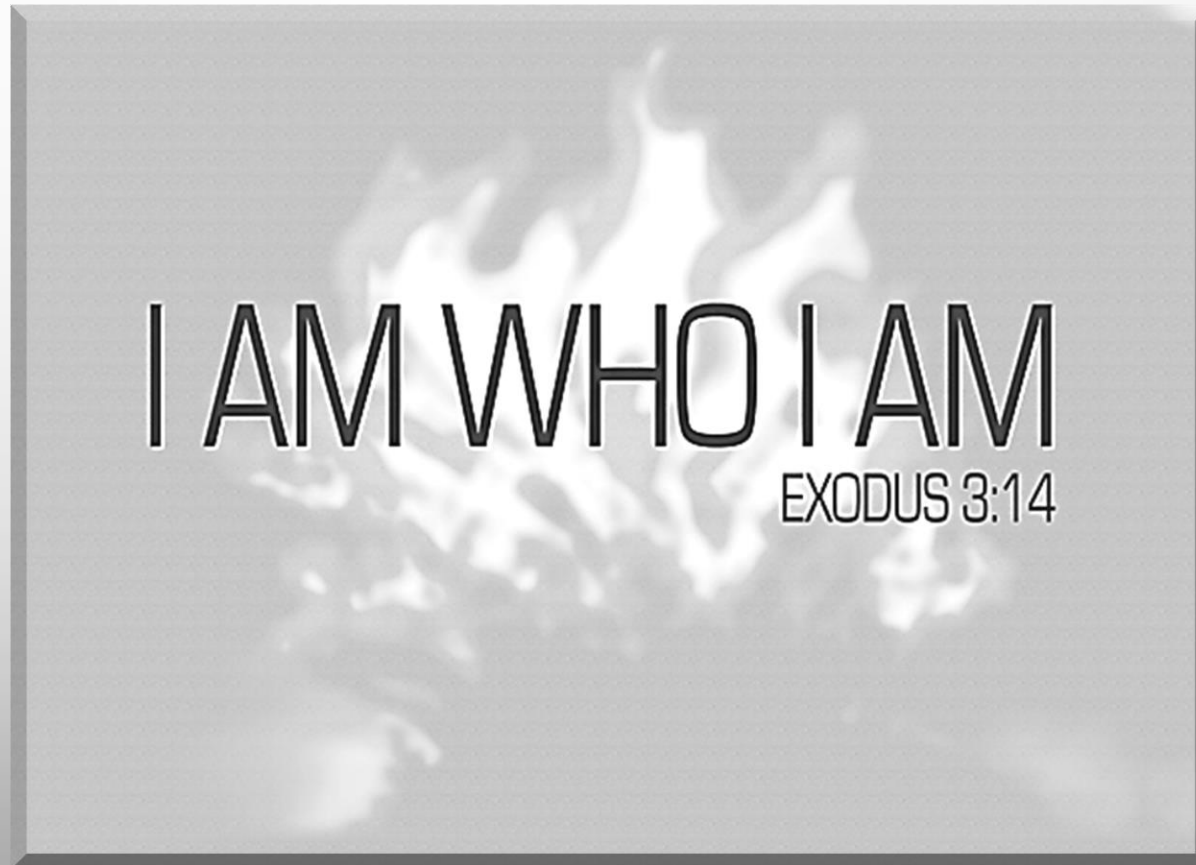


מכון טכנולוגי חולון
Holon Institute of Technology

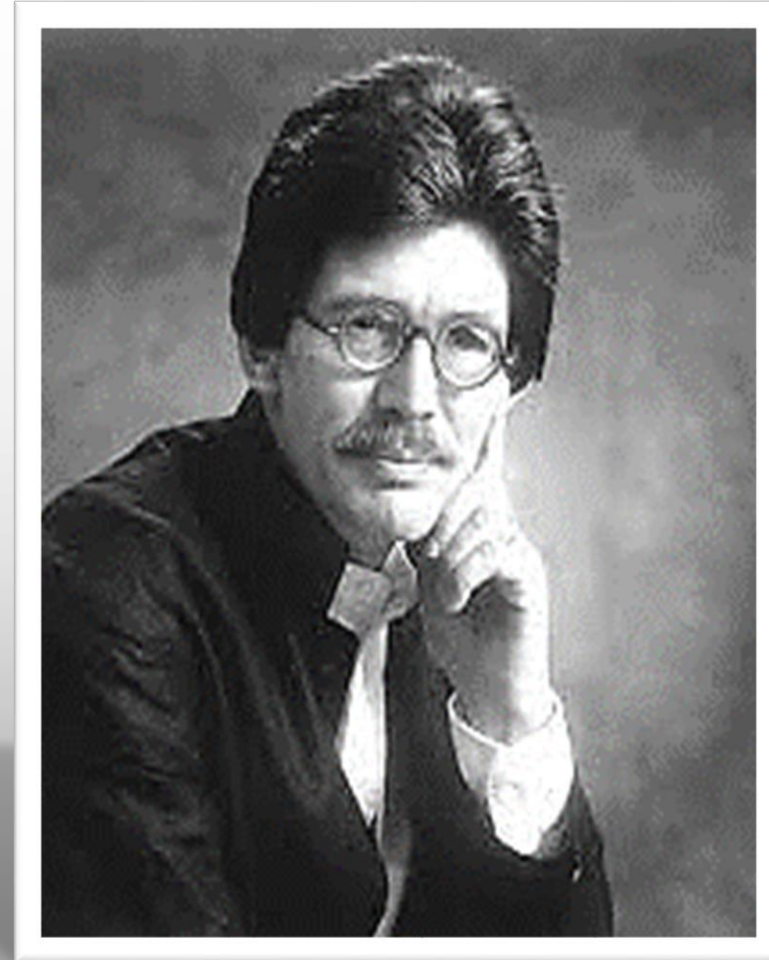
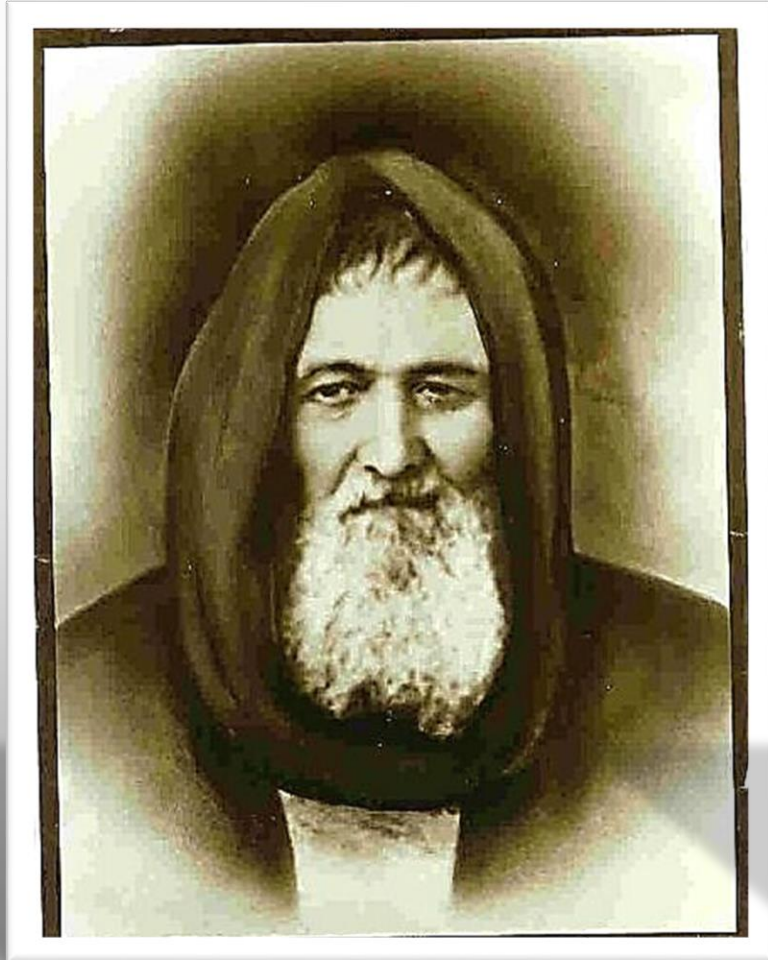
**ANY SUFFICIENTLY
ADVANCED
TECHNOLOGY IS
INDISTINGUISHABLE
FROM MAGIC.**

Arthur C. Clarke

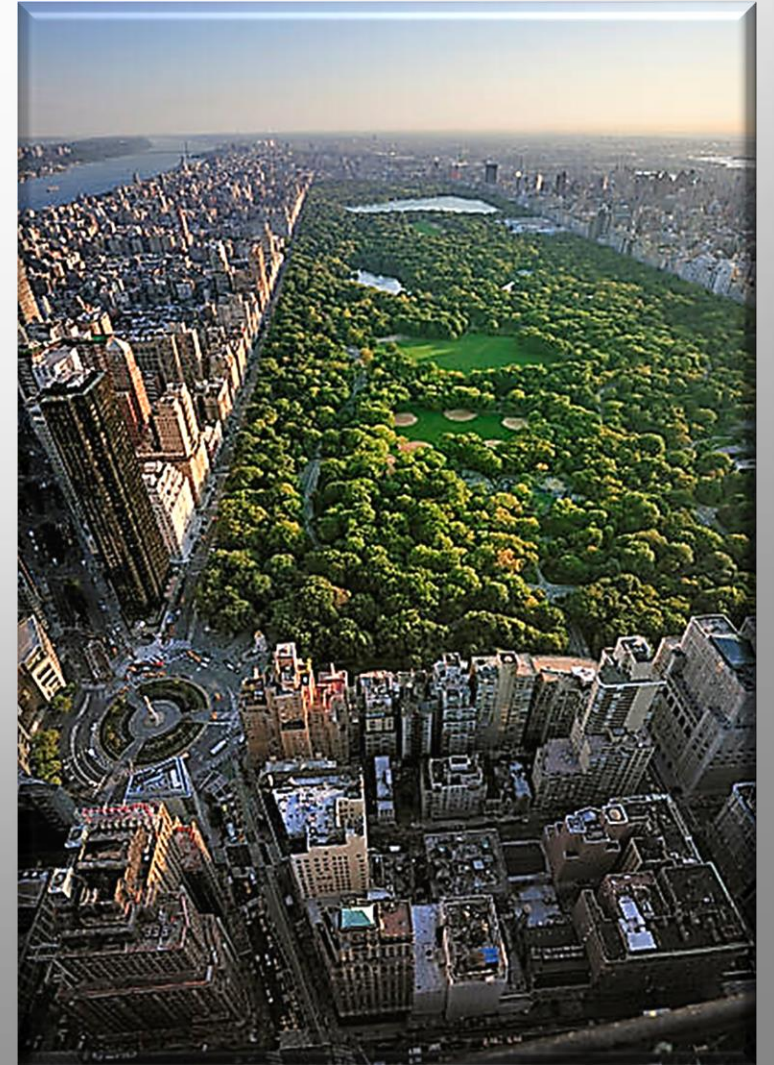
The Inherent Unknowability of GOD



The Inherent Unknowability of GOD

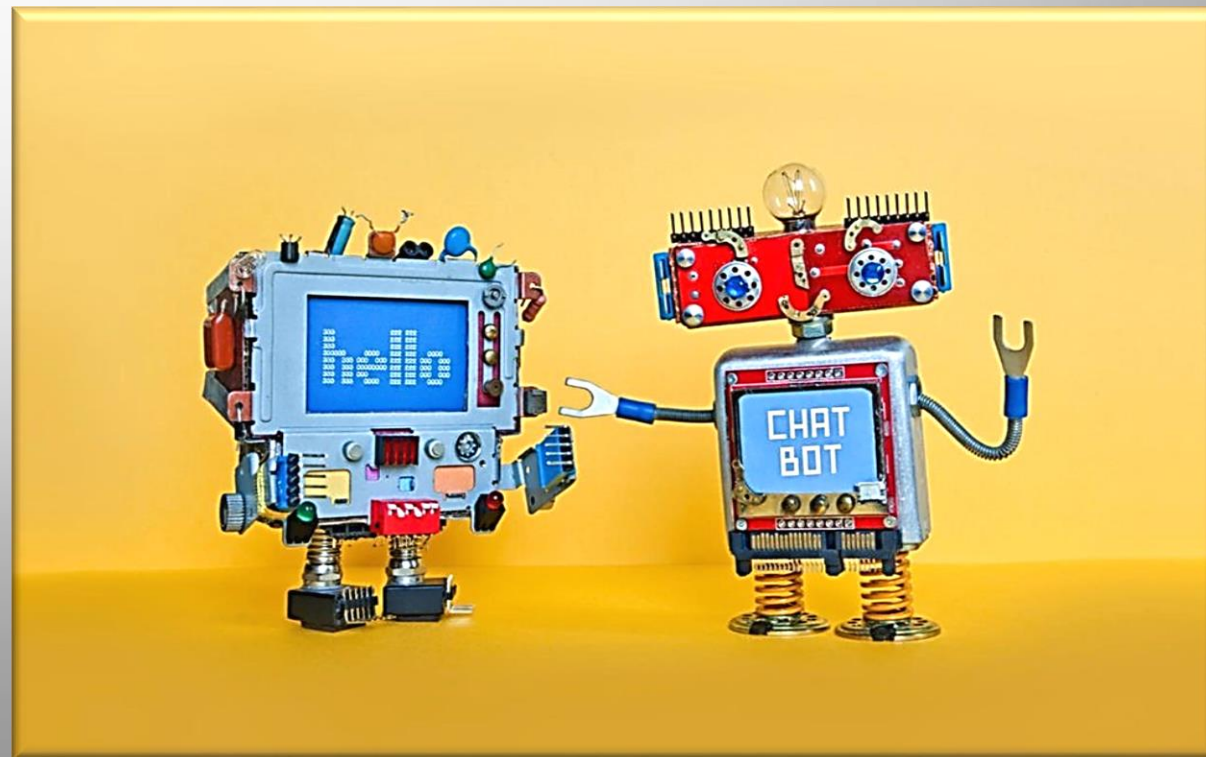
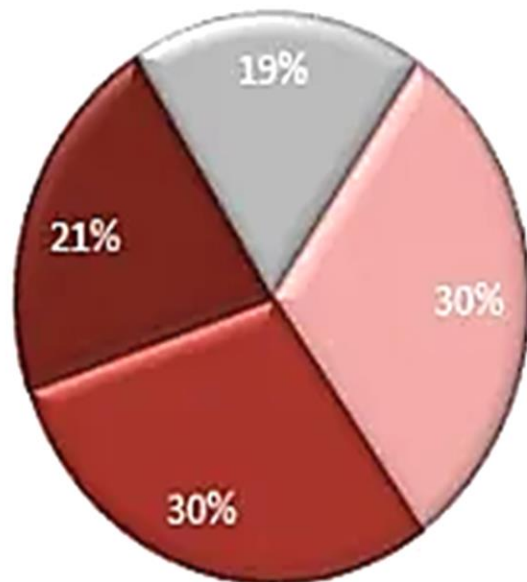


Structuralism / Binary Oppositions



Religious Situationality / Anthropomorphism

- Non-Believers
- Spiritually Uncertain
- Privately Faithful
- Religiously Committed



The Halo Effect of Technical Difficulty



Abduction

Abduction is induction in the service of explanation in which an empirical rule is created to render predictable what would otherwise be mysterious.



Abductive Reasoning

The four components of “art” and their social relations:

- 1. Indexes: Material entities which motivate abductive inferences.**
- 2. Artists/Originators: To whom are ascribed, by abduction causal responsibility for the existence and characteristics of the index.**
- 3. Recipients: Those in relation to whom, by abduction, indexes are considered to exert agency, or who exert agency via the index.**
- 4. Prototypes: Entities held, by abduction, to be represented in the index, often by virtue of visual resemblance, but not always.**

Conclusions

- **Advanced technology is magical to some extent, if it operates as “art”.**
- **Technical endeavors are “art” to the extent that they are neither unknowable, nor entirely elucidated.**
- **Beauty and enchantment are legitimate words to describe technology (and not solely as metaphors), since you are artists as much as you are magicians.**